

MAKER FAIRE AFRICA 2012 : LAGOS  
WORKSHOP - NOVEMBER 6TH IN THE POP-UP MAKER SPACE

# ASO- OKELECTRIC!

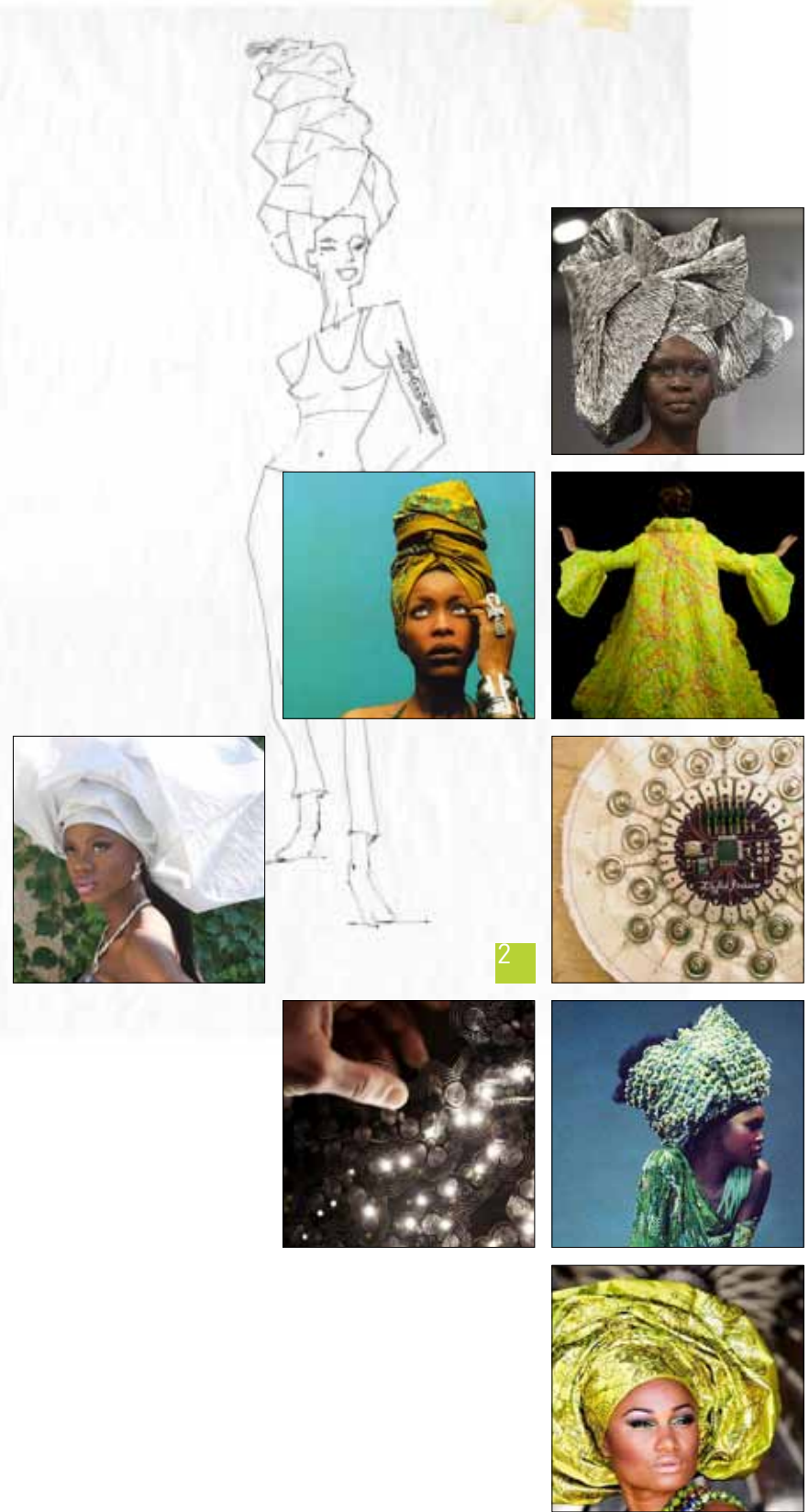


FASHIONING SOLAR, ARDUINO + ELECTROTEXTILES INTO  
WEARABLE TECHNOLOGY HEADWRAPS, BLURRING THE LINE  
BETWEEN FASHION + FUNCTION

=

WIRED WITH ARDUINO OR SOLAR, THE MODERN GELE COULD BECOME A SOURCE OF PERSONAL ENERGY GENERATION

HIGH, WIDE OR COMPLICATED TIES AND DESIGNS WERE A SIGN OF WEALTH + COMMUNITY STATUS. TODAY, THEY ARE MERELY AN EXPRESSION OF THE UNIQUE + VARIED TASTES OF THE WOMEN WHO WEAR THEM.



3

1

WORN BY AFRICAN WOMEN FOR HUNDREDS OF YEARS, AS A CULTURAL SYMBOL OF THEIR STATION IN LIFE, THE MODERN 'GELE' HAS BEEN DEMOCRATIZED INTO A FASHION STATEMENT, WORN BY THE WOMAN WHO WISHES TO PAY TRIBUTE TO HER AFRICAN HERITAGE, AS WELL AS THE NON-AFRICAN WOMAN WHO WISH TO ADOPT AN ETHNO-EXOTIC STYLE.

GELES WERE ORIGINALLY MADE FROM LARGE SQUARES OR LONG LENGTHS OF PATTERNED FABRIC THAT WERE FOLDED AND TIED IN ARRANGEMENTS THAT VARIED ACCORDING TO LOCAL CUSTOM. THE STYLES AND FOLDS AND THE FABRIC USED FOR THE GELE ALL SERVED TO IDENTIFY THE WOMAN WEARING THEM AS A PARTICULAR SOCIAL STATUS, AREA OF ORIGIN, OR THE CEREMONIAL OCCASION AT WHICH IT WAS WORN. TODAY, THE SHAPE + STRUCTURE OF A GELE IS GENERALLY REFLECTIVE OF THE UNIQUE AND VARIED TASTES OF EACH WOMAN WHO WEARS THEM.

THE TYPE OF GELE WORN BY WOMEN TODAY, WITH ITS FOLDS AND WIDE SHAPE, ORIGINATED AMONG THE YORUBA PEOPLE IN NIGERIA. THEY INVENTED A WOVEN TEXTILE CALLED ASO-OKE, WHICH IS STILL USED TO MAKE GELE. TODAY THE TRADITION OF ASO OKE WEAVING CENTERS AROUND THREE PRESTIGE CLOTHS: ETU; SANYAN; AND ALAARI; ALTHOUGH IN REALITY A FAR WIDER RANGE OF DESIGNS WERE WOVEN IN THE PAST.

ASO-OKE IS A HAND-LOOMED FABRIC THAT HAS LONG BEEN CONSIDERED A 'SPECIAL OCCASION' TEXTILE, USED ONLY FOR 'EVENT' FASHIONS + FURNISHINGS.

IN THE **ASO-EKELECTRIC!** WORKSHOP, YORUBA WEAVERS WILL EXPLORE THE ADDITION OF CONDUCTIVE MATERIALS INTO TRADITIONAL ASO-EKE FABRIC, CREATING A DECIDEDLY NIGERIAN ELECTROTEXTILE FOR USE IN THE EMERGING AFRICAN FASHION INDUSTRY.

IN THE **LIGHT UP YOUR GELE!** WORKSHOP, WE'LL EXPLORE THE INTEGRATION OF ARDUINO LILYPADS, SENSORS AND SOLAR INTO THE MODERN NIGERIAN GELE, TESTING HOW FAR WE CAN BLUR THE LINES BETWEEN FASHION AND FUNCTION.

CAN A GELE HELP LIGHT UP THE WORLD?  
WE'RE BETTING ON IT.

**LIGHT UP YOUR GELE! WORKSHOP DETAILS :**

“LIGHT UP YOUR GELE” IS OPEN TO ANYONE, AND WILL BE HELD UNDER THE POP-UP MAKER SPACE AT OUR PUBLIC FAIR. REGISTRATION IS ON A FIRST-COME BASIS.

**WORKSHOP DURATION:**

- 1 SESSION OF 15 PARTICIPANTS
- 2 HOURS WITH 15-MINUTE BREAK HALF-WAY

**WORKSHOP TEAM:**

JENNIFER WOLFE, DESIGNER AND MAKER FAIRE AFRICA DESIGN LEAD  
BILAL GHALIB, NOTORIOUS GEEK AND GEMSI FOUNDER  
ADEBAYO OKE-LAWAL, LAGOS FASHION DESIGNER AND STYLIST  
HENRY BARNOR, ARDUINO EXPERT AND MFA TECH LEAD

**EQUIPMENT, TOOLS & SUPPLIES NEEDED:**

- 18 LILYTINY BOARDS
- 18 COIN CELL BATTERIES
- 18 COIN CELL HOLDERS
- 3 CONDUCTIVE THREAD 4PLY
- 3 CONDUCTIVE THREAD 2PLY
- NEEDLES FOR SEWING WITH CONDUCTIVE THREAD
- 18 LILYPAD MICRO WHITE
- 8 CONDUCTIVE FABRIC MEDTEX 180
- MEASURING TAPES, SCISSORS
- CONDUCTIVE VELCRO
- METAL BEADS, POPPERS, SNAPS

**ASO-OKELECTRIC! WORKSHOP DETAILS :**

“ASO-OKELECTRIC” IS A POST-MFA WORKSHOP HELD AT A YORUBA WEAVERS COLLECTIVE, BY INVITATION.

**WORKSHOP DURATION:**

- 1 SESSION OF 8 WEAVERS
- 6 HOURS WITH TWO 30-MINUTE BREAKS

**WORKSHOP TEAM:**

HERITAGE ASO-OKE, LAGOS WEAVERS COLLECTIVE  
JENNIFER WOLFE, DESIGNER AND MAKER FAIRE AFRICA DESIGN LEAD  
BILAL GHALIB, NOTORIOUS GEEK AND GEMSI FOUNDER  
ADEBAYO OKE-LAWAL, LAGOS FASHION DESIGNER AND STYLIST

**EQUIPMENT, TOOLS & SUPPLIES NEEDED:**

- CONDUCTIVE YARN
- CONDUCTIVE THREAD
- CONDUCTIVE WOOL
- FINE STEEL WOOL
- MEDTEX 180
- COPPER TAPE
- TIN FOIL
- THIN FLEXIBLE WIRE
- RESISTIVE RUBBER